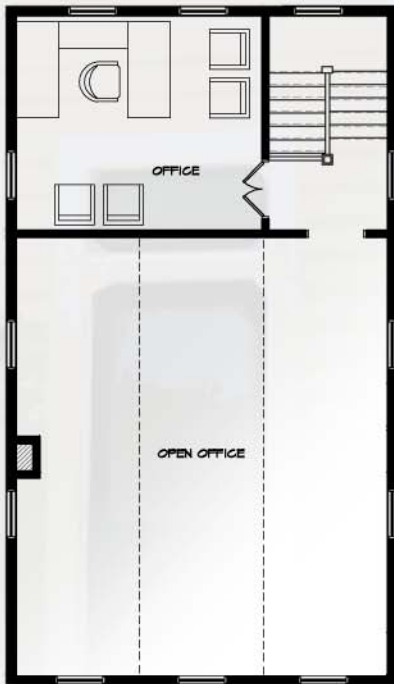


FOR LEASE - Available Immediately

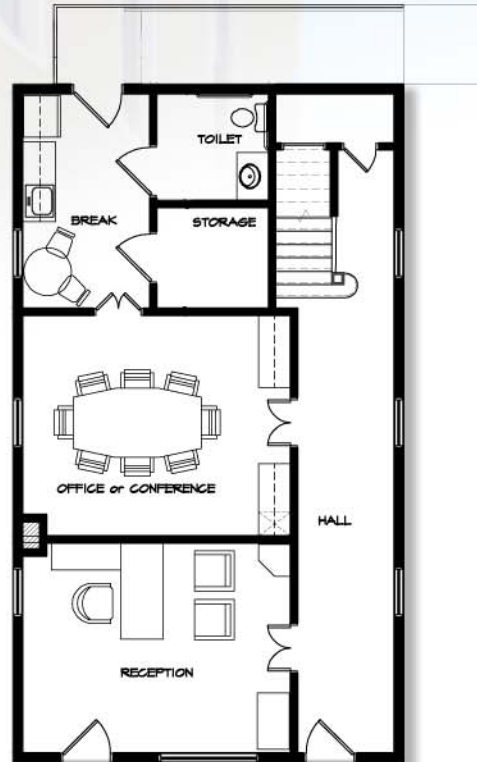
Historic Smithfield Masonic Building

115 N. Second Street
2061 square feet - \$16/square foot triple net
919-829-4969

- Unique Office Setting;
National Register
Building
- Downtown Smithfield;
walk to Courthouse
- On-site parking
- Complete Restoration;
new electrical, HVAC
and plumbing systems
- Vaulted ceilings on
upper level
- Refinished heart pine
floors



UPPER FLOOR PLAN



LOWER FLOOR PLAN